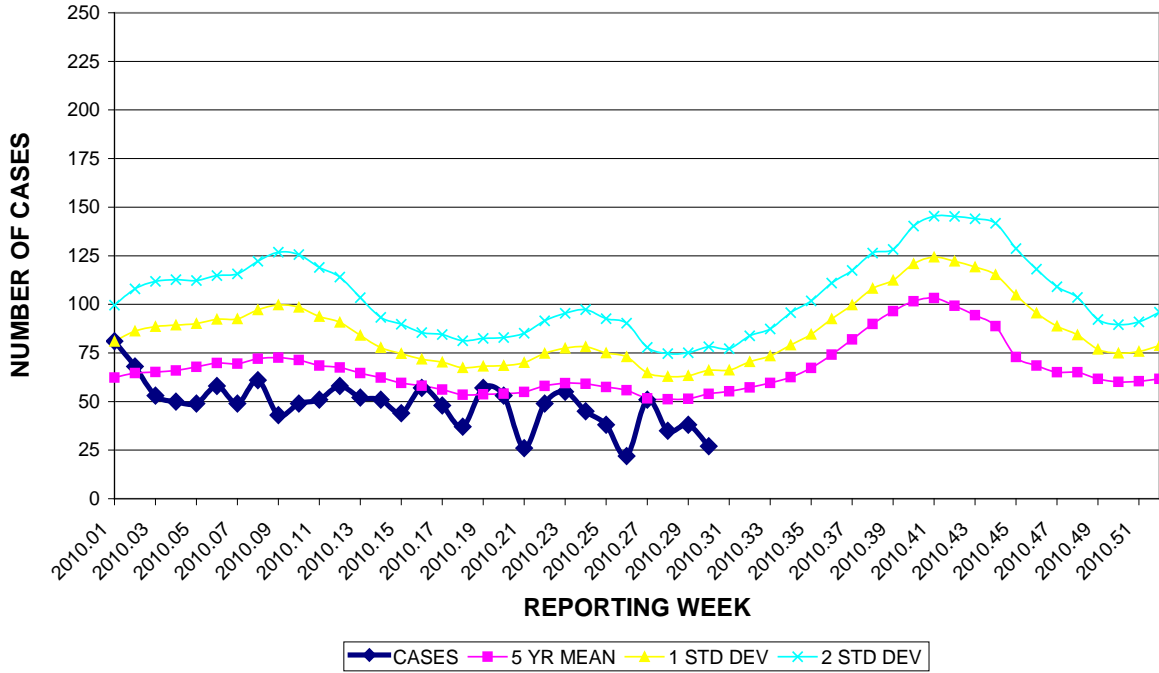


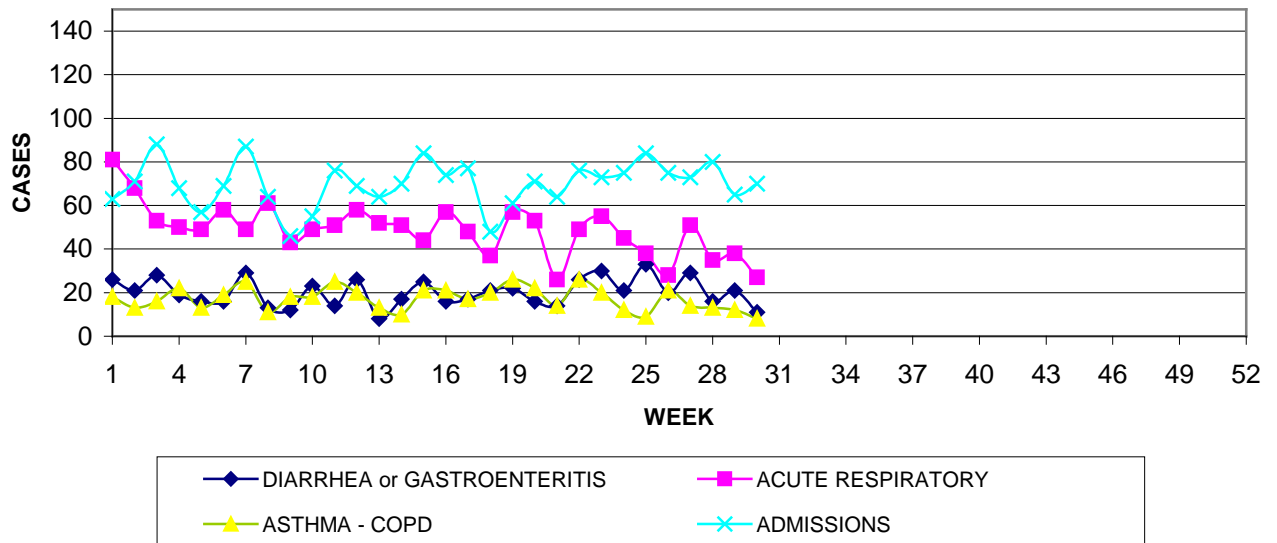
GUAM MEMORIAL HOSPITAL AUTHORITY
 INFECTION CONTROL DEPARTMENT
GUAM EPIDEMIOLOGY NEWSLETTER
 REPORT FOR WEEK ENDING: 7/31/2010 (Reporting week 2010-30)

GUAM REPORTS

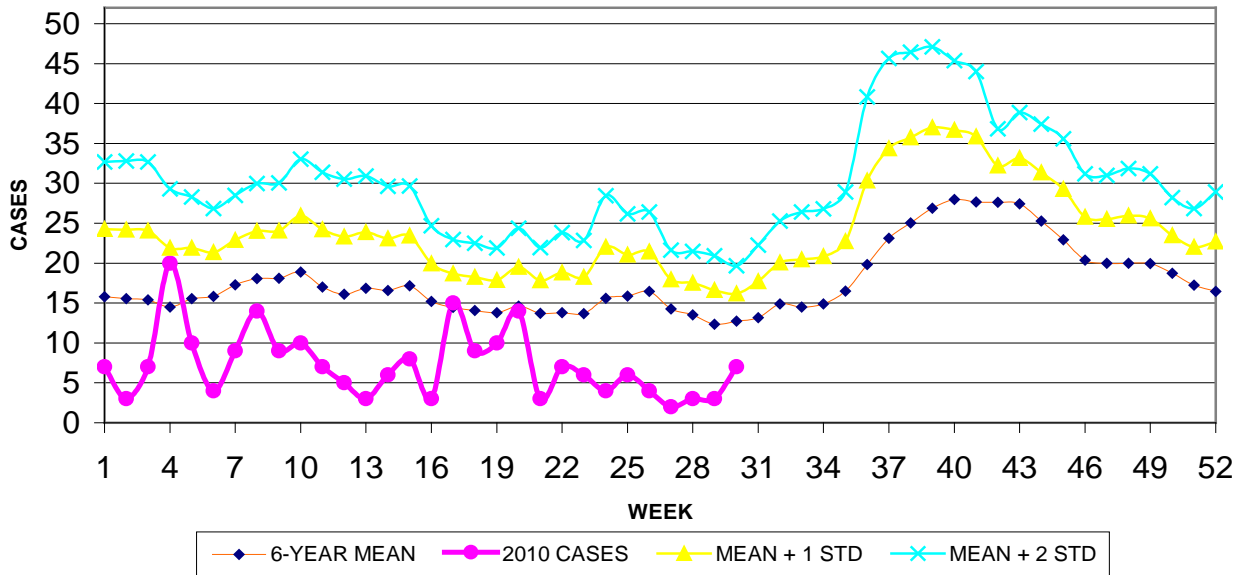
GUAM ACUTE RESPIRATORY DISEASE SURVEILLANCE, 2010
NUMBER OF PATIENTS SEEN IN GMHA-ED BY WEEK SEEN



GUAM SYNDROMIC DISEASE SURVEILLANCE
GMHA-ED PATIENT DIAGNOSES BY WEEK FOR
CALENDAR YEAR 2010



MEDICAL RECORDS AND INFECTION CONTROL DEPARTMENTS
 GUAM MEMORIAL HOSPITAL AUTHORITY
**HOSPITAL INPATIENT DISCHARGES WITH A DIAGNOSIS OF
 PNEUMONIA BY WEEK DISCHARGED, 2010**



GUAM SENTINEL PHYSICIAN INFLUENZA SURVEILLANCE
 REPORTS OF INFLUENZA OR INFLUENZA-LIKE ILLNESSES
 RECEIVED FOR THE WEEK ENDING 7/31/2010

No activity - No cases reported by sentinel physicians
 (ACTIVITY LEVELS: No activity, Sporadic, Local, Regional, Widespread)

Foreign Quarantine & Enteric Diseases Section
 Bureau of Communicable Disease Control
 Guam Department of Public Health & Social Services
H1N1 INFLUENZA SURVEILLANCE, WEEK 30, 2010
 H1N1 INFLUENZA SURVEILLANCE, WEEKS 1-30, 2010
 Cumulative 2010: 3 civilian & 0 military cases
NO NEW CASES OF H1N1 CONFIRMED FOR WEEK 30

INFECTION CONTROL DEPARTMENT
 GUAM MEMORIAL HOSPITAL AUTHORITY
**HOSPITALIZATIONS FOR INFLUENZA BY AGE
 AND MORBIDITY REPORTING WEEK, 2010**

AGE	21	22	23	24	25	26	27	28	29	30	TOTAL
0-4									1		2
5-18											1
19-24											
25-49	1										2
50-64											1
65+											
TOTAL	1	0	0	0	0	0	0	0	1	0	6

GUAM MEMORIAL HOSPITAL
 INFECTION CONTROL DEPARTMENT
**GMHA-EMERGENCY DEPARTMENT CLINICAL DIAGNOSES OF INFLUENZA OR
 FLU-SYNDROME BY WEEK AND PATIENT'S VILLAGE OF RESIDENCE, 2010**
 (Villages listed geographically from northern-most to southern-most)

VILLAGE	WEEK										TOTAL	RATE Weeks 1-30, 2010
	21	22	23	24	25	26	27	28	29	30		
Yigo	2	0	1	1	0	0	0	0	0	0	7	30.79
Dededo	2	1	0	0	0	0	1	0	0	0	12	23.92
Tamuning	0	0	0	0	0	0	0	0	0	0	1	4.76
Barrigada	0	1	0	0	0	0	0	0	0	0	4	39.61
Mangilao	0	0	0	0	0	0	0	0	0	0	2	12.87
M-T-M	0	0	0	0	0	1	0	0	0	0	7	102.61
Hagatna	0	0	0	0	0	0	0	0	0	0	1	77.88
Agaña Hts	0	0	0	0	0	0	0	0	0	0	0	0
Sinajana	0	0	0	0	0	0	0	0	0	0	0	0
Chalan Pago- Ordot	0	0	0	0	0	0	0	0	0	0	2	28.93
Asan-Maina	0	0	0	0	0	0	0	0	0	0	0	0
Piti	0	0	0	0	0	0	0	0	0	0	0	0
Santa Rita	0	0	0	0	0	0	0	0	0	0	0	0
Agat	0	0	0	0	0	0	0	0	0	0	1	15.15
Yona	0	0	0	0	0	0	0	0	0	0	2	26.43
Talofof	0	0	1	0	0	0	0	0	0	0	2	53.29
Inarajan	0	0	0	0	0	0	0	0	0	0	0	0
Merizo	0	0	0	0	0	0	0	0	0	0	2	79.21
Umatac	0	0	0	0	0	0	0	0	0	0	0	0
TOTAL	4	2	2	1	0	1	1	0	0	0	43	23.80

NOTE: Rate = cases per 100,000 population for the specified period.

GUAM ANIMAL DISEASE (ZONOSSES) REPORTS
 REPORTS RECEIVED FOR THE WEEK ENDING 7/31/2010

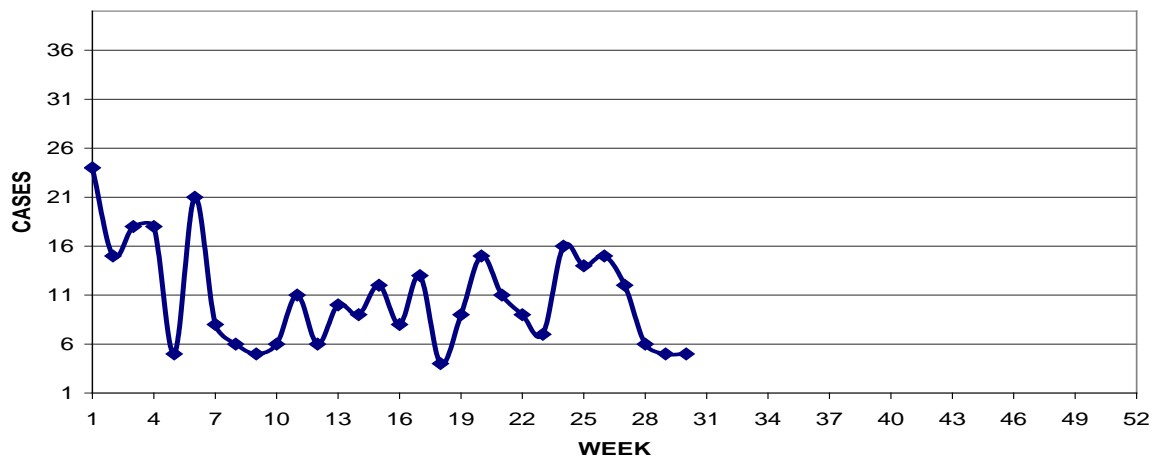
None received

BUREAU OF COMMUNICABLE DISEASE CONTROL
DEPARTMENT OF PUBLIC HEALTH AND SOCIAL SERVICES
ISLAND-WIDE COMMUNICABLE DISEASE REPORT

REPORTS RECEIVED FOR THE WEEK ENDING 7/31/2010

<i>Acinetobacter baumani</i> MDR	1
Camplobacter	1
Chlamydia	7
Conjunctivitis	3
Gonorrhea	1
Hepatitis A	3
Hepatitis B	3
Hepatitis C	2
HSV 2	1
<i>Klebsiella pneumoniae</i> MDR	1
MRSA	7
Shigellosis	2
Streptococcal sore throat	4
Tuberculosis	4

PREVENTIVE MEDICINE DEPARTMENT
U.S. NAVAL HOSPITAL GUAM
**PNEUMONIA CASES SEEN IN GUAM MILITARY TREATMENT
FACILITIES BY WEEK REPORTED, 2010**



REGIONAL NEWS

Bali - A rabies epidemic still ravages Bali, an island of 3 million people and one of Asia's top tourist destinations. Seventy-eight deaths have officially been logged in the past two years, including that of a 40-year-old woman a week ago, and many other deaths have likely gone unreported. Several countries, including the United States and Australia, have issued travel warnings advising vacationers to consider getting pre-exposure rabies vaccinations before arriving and to avoid contact with dogs while in Bali. A handful of foreign tourists have reported dog bites, but so far none have been fatal.

Rabies kills some 55,000 people annually — mostly children — with nearly 60 percent of those deaths from dog bites in Asia, according to the WHO.

Source: <<http://www.newser.com/writer-grid/57/mary-papenfuss.html>>

New Zealand - New Zealand is currently experiencing a second wave of Pandemic A (H1N1) 2009 cases with influenza activity continuing to increase on a regional level. To date there have been 335 lab confirmed cases reported, including 163 H1N1 hospitalisations for 2010 compared to a total of 1122 for all of 2009. *Source: New Zealand Ministry of Health, July 30, 2010 release*