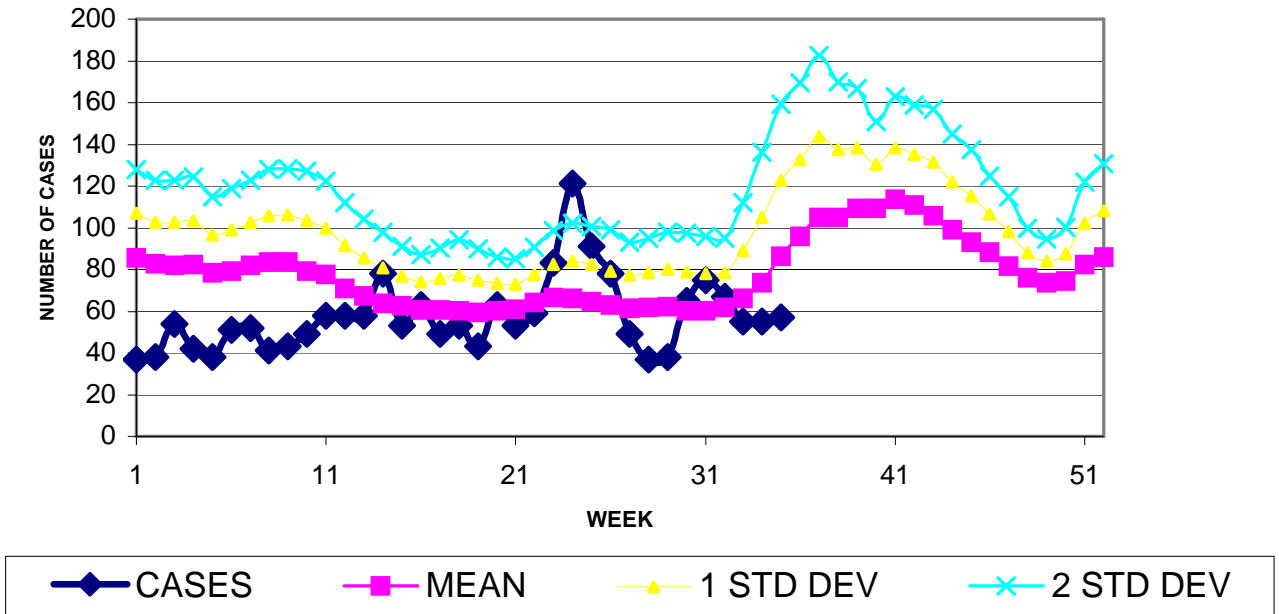


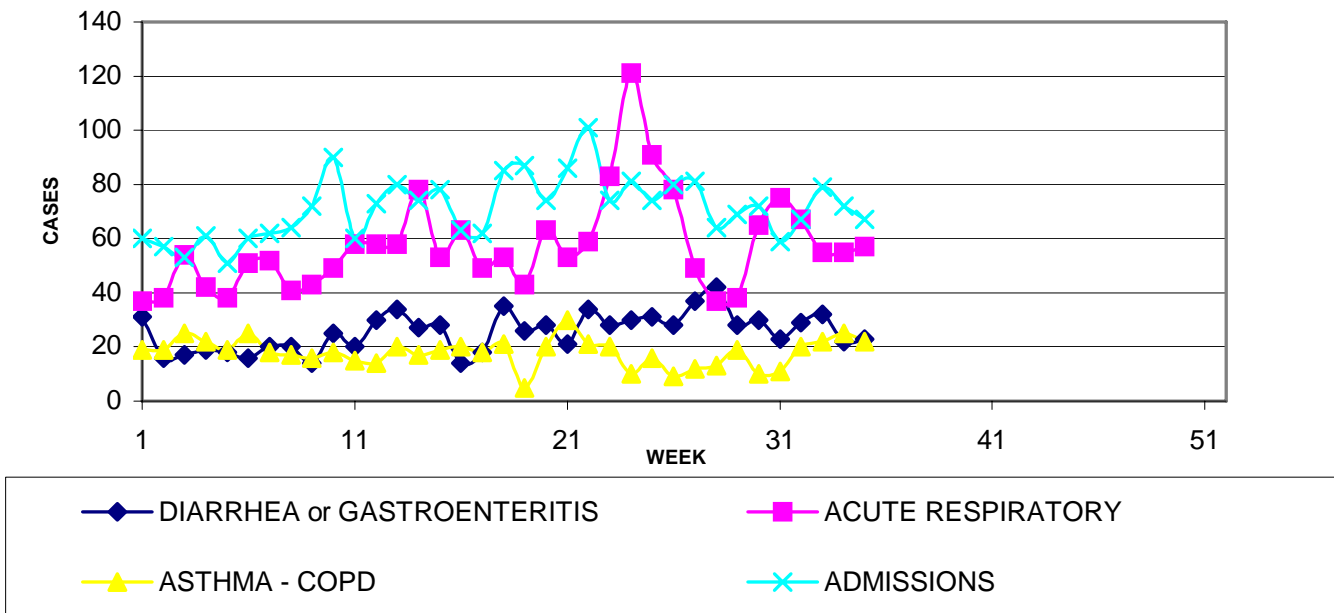
GUAM EPIDEMIOLOGY NEWSLETTER
 REPORT FOR WEEK ENDING: 9/2/2006 (Reporting week 2006-35)

GUAM REPORTS

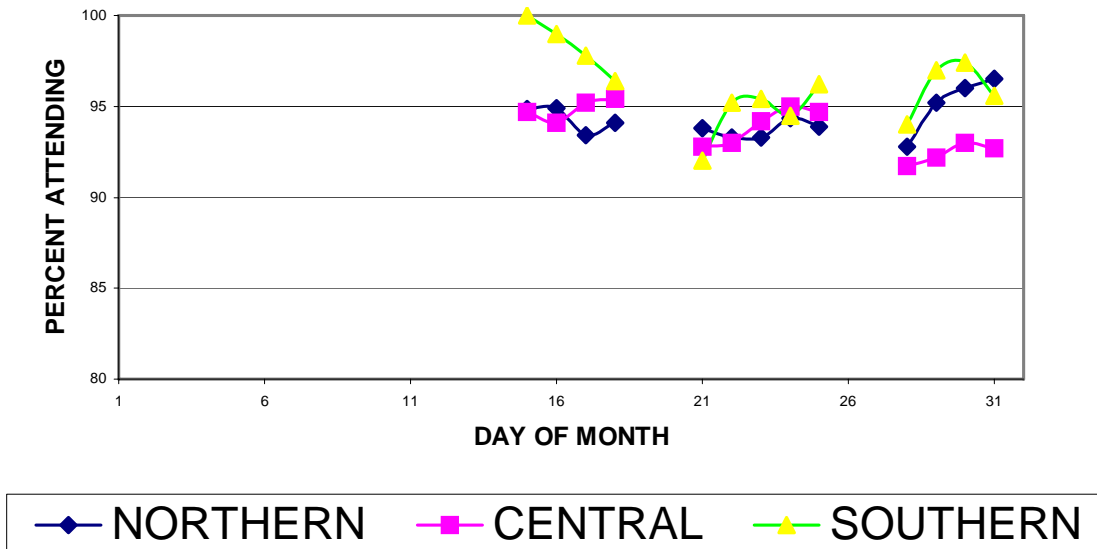
**GUAM ACUTE RESPIRATORY DISEASE SURVEILLANCE, 2006;
 NUMBER OF PATIENTS SEEN IN THE GMHA-ED BY WEEK SEEN**



**GUAM SYNDROMIC DISEASE SURVEILLANCE
 GMHA-ED PATIENT DIAGNOSES BY WEEK FOR CALENDAR YEAR 2006**



GUAM SCHOOL ATTENDANCE PERCENT BY REGION AUGUST 2006



GUAM MORBIDITY WEEKLY REPORT REPORTS RECEIVED DURING THE WEEK ENDING 9/2/2006

DISEASE	CASES
CAMPYLOBACTER	1
CHICKENPOX	2
CHLAMYDIA	1
CONJUNCTIVITIS	1
GIARDIASIS	2
MRSA	9
PERTUSSIS (suspect)	1
SHIGELLOSIS	2
STREP SORE THROAT	14

OTHER NEWS OF INTEREST

ABS CBN NEWS. August 31, 2006. Health officials in Pangasinan [Philippines] have allayed fears of a dengue outbreak after at least nine people died of dengue in the last six weeks, ANC reported Sunday. The provincial health office said the number of dengue-related deaths has not reached alarming levels. It pegged the number of suspected dengue cases at 200. A total of 188 cases have been confirmed. Officials said that the rise in dengue cases is expected during the rainy season. They, however, advised the public to observe anti-dengue measures.

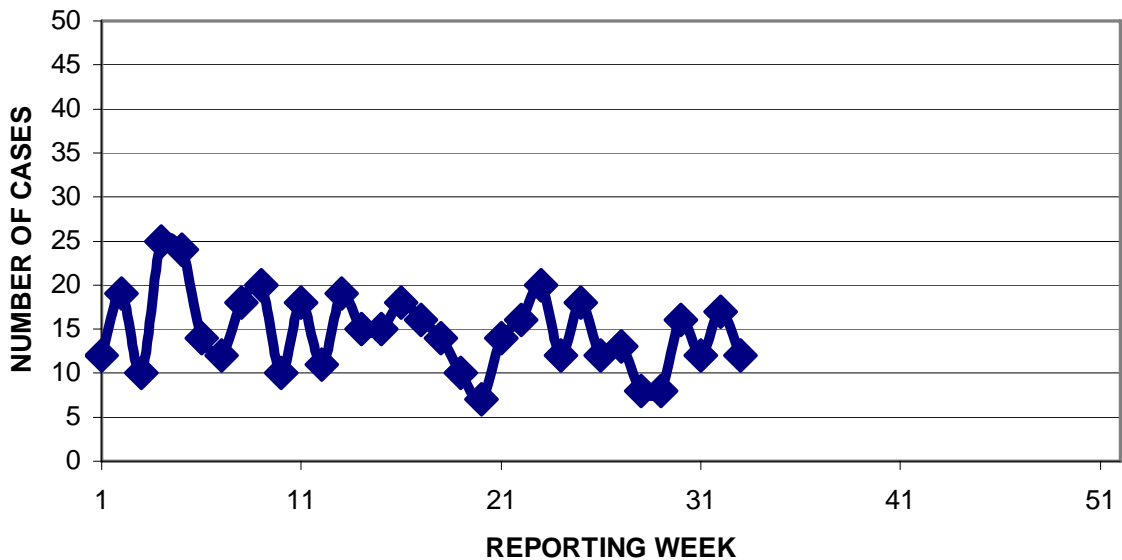
The story above is an interesting counterpoint to the recent discussion on Guam regarding the definitions of *outbreak* and *epidemic*. For the present, our working definition of an *outbreak*

will be a number of cases of a disease exceeding the mean of the previous 5 years by 2 standard deviations (data generally analyzed by week). If there is subsequent local propagation of *outbreak* cases, the incident would be elevated to *epidemic* status. Thus a large number of food poisoning cases occurring as a result of a common meal would initially be considered an *outbreak* but if second or additional generations of cases occur as a result of transmission within case families or other close contacts of the initial cases, the *outbreak* would be elevated to the status of an *epidemic*. These definitions are subject to revision and comments will be appreciated.

U . S . NAVY (GUAM) REPORTS

Preventive Medicine Department
US Naval Hospital Guam

PNEUMONIA CASES SEEN IN GUAM MILITARY TREATMENT FACILITIES BY WEEK REPORTED, 2006



GUAM PERTUSSIS UPDATE

As of September 6, 2006, the number of confirmed pertussis cases remains at 6. The number of probable cases (those meeting the CDC clinical definition of pertussis but lacking laboratory confirmation) has risen to 39. Ten cases are currently being evaluated and are considered “suspect” cases, including 1 case that was reported in the last week.