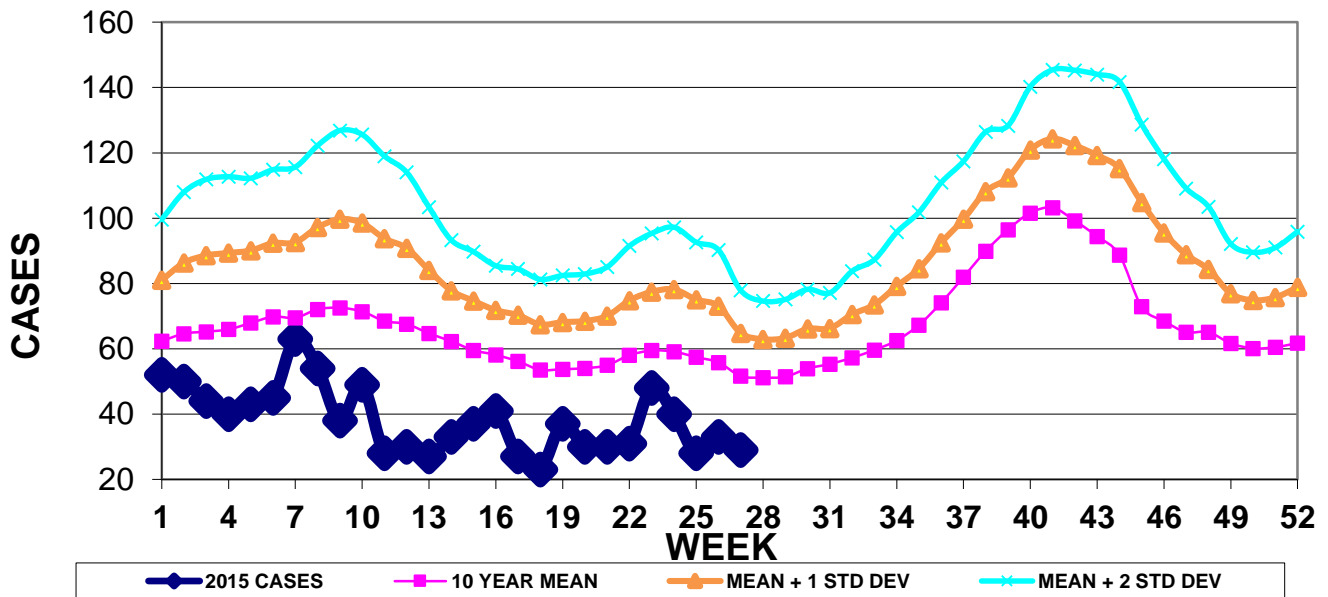


INFECTION CONTROL DEPARTMENT  
 GUAM MEMORIAL HOSPITAL AUTHORITY  
**GUAM EPIDEMIOLOGY NEWSLETTER**

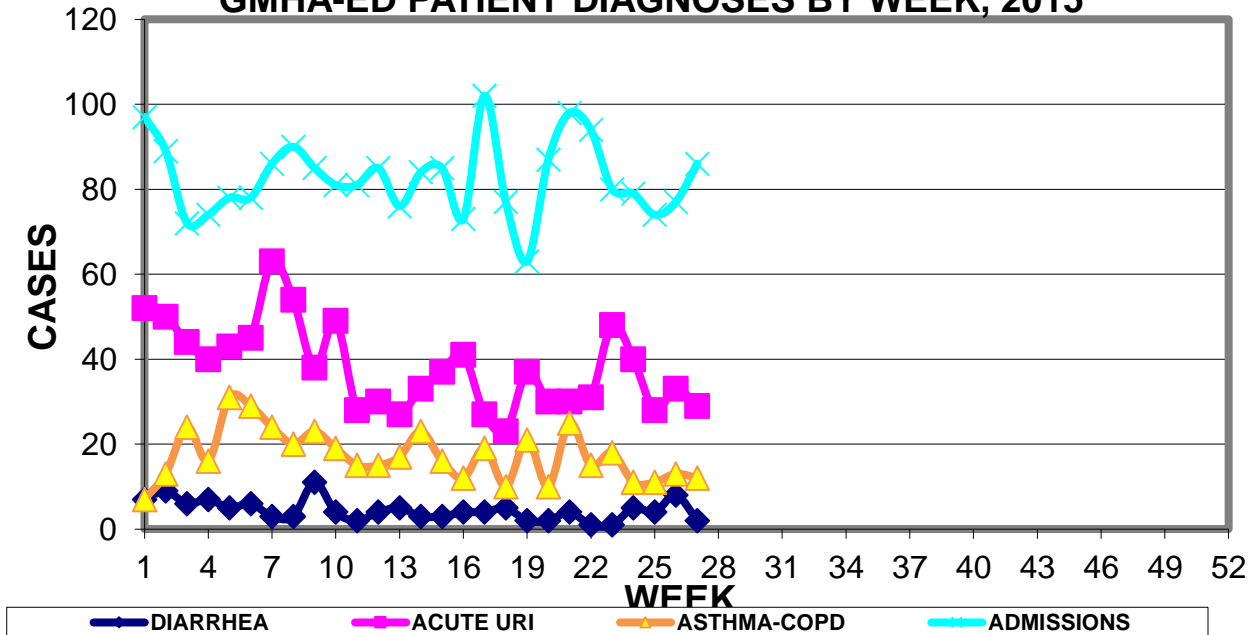
REPORT FOR WEEK ENDING: 7/11/2015 (Reporting week 2015-27)

**GUAM REPORTS**

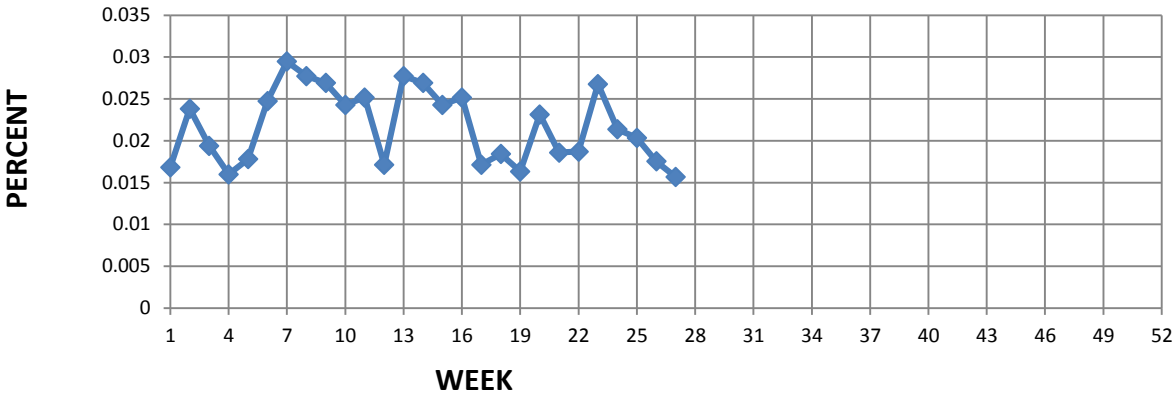
**GUAM ACUTE RESPIRATORY INFECTION SURVEILLANCE 2015;  
 GMHA-EMERGENCY DEPARTMENT PATIENTS BY WEEK SEEN**



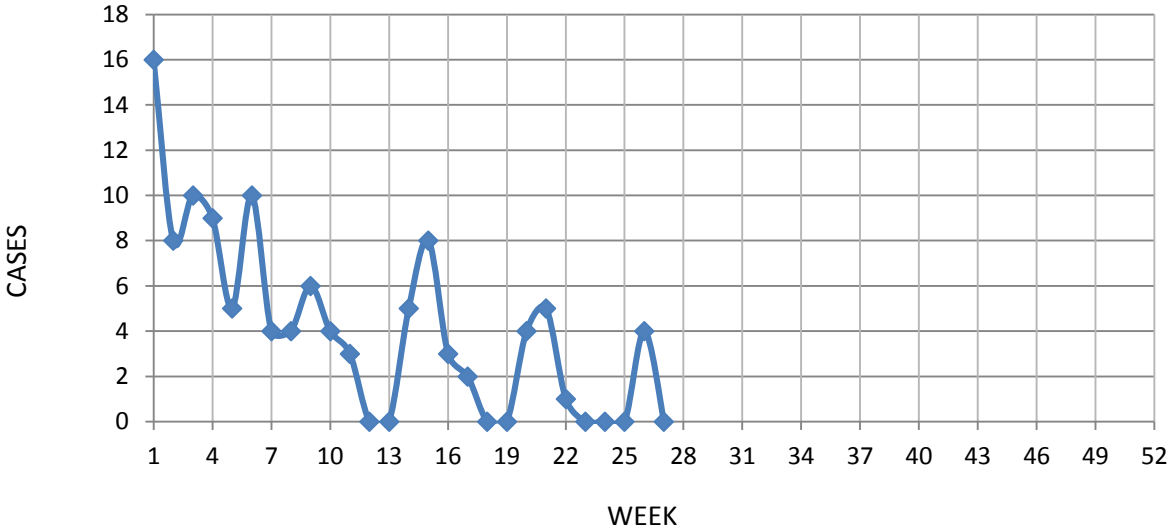
**GUAM SYNDROMIC DISEASE SURVEILLANCE  
 GMHA-ED PATIENT DIAGNOSES BY WEEK, 2015**



# Percent of total GMHA-ER patients with Influenza/ILI symptoms (3-week smoothed)



# NUMBER OF CASES OF INFLUENZA AND ILI REPORTED BY SENTINEL PHYSICIANS BY WEEK REPORTED, 2015



**GUAM SENTINEL PHYSICIAN INFLUENZA SURVEILLANCE**  
 REPORTS OF INFLUENZA OR INFLUENZA-LIKE ILLNESSES  
 RECEIVED FOR THE WEEK ENDING 7/11/15  
 No cases reported by sentinel physicians

Bureau of Communicable Disease Control  
 Guam Department of Public Health & Social Services  
**H1N1 INFLUENZA SURVEILLANCE, WEEK 27**  
 NO CASES OF H1N1 REPORTED FOR WEEK 27  
**Cumulative 2015: 0 civilian & 0 military cases**

INFECTION CONTROL DEPARTMENT  
 GUAM MEMORIAL HOSPITAL AUTHORITY  
**HOSPITALIZATIONS FOR INFLUENZA A BY AGE**  
**AND MORBIDITY REPORTING WEEK, 2015**

<b>AGE</b>	<b>16</b>	<b>17</b>	<b>18</b>	<b>19</b>	<b>20</b>	<b>21</b>	<b>22</b>	<b>23</b>	<b>24</b>	<b>25</b>	<b>26</b>	<b>27</b>	<b>TOTAL</b>
0-4													
5-18							1						1
19-24													
25-49													
50-64													
65+													1
<b>TOTAL</b>	<b>0</b>	<b>0</b>	<b>0</b>	<b>0</b>	<b>0</b>	<b>0</b>	<b>1</b>	<b>0</b>	<b>0</b>	<b>0</b>	<b>0</b>	<b>0</b>	<b>2</b>

Bureau of Communicable Disease Control  
 Guam Department of Public Health & Social Services  
**ISLAND-WIDE COMMUNICABLE DISEASE REPORT**

REPORTS RECEIVED DURING THE WEEK ENDING 7/11/2015

<i>Chlamydia trachomatis</i>	42
Conjunctivitis	8
Gonorrhea	2
Hepatitis A	1
Hepatitis B	1
Hepatitis C	2
HPV	5
HSV 2	3
Parvovirus	2
Scabies	3
Streptococcal sore throat	8
Streptococcal disease, other	1

INFECTION CONTROL DEPARTMENT  
 GUAM MEMORIAL HOSPITAL AUTHORITY  
**GMHA-EMERGENCY DEPARTMENT CLINICAL DIAGNOSES OF INFLUENZA OR  
 FLU-SYNDROME BY WEEK AND PATIENT'S VILLAGE OF RESIDENCE, 2015**  
 (Villages listed geographically from northern-most to southern-most)

VILLAGE	WEEK										TOTAL	2015 RATE
	18	19	20	21	22	23	24	25	26	27		
Yigo	1	1	1	1	1	0	1	1	0	0	30	143.87
Dededo	1	4	2	4	1	5	3	1	2	1	74	162.18
Tamuning	1	1	0	0	1	1	1	1	2	1	26	130.10
Barrigada	1	0	1	0	0	1	0	0	0	0	11	122.09
Mangilao	1	2	4	0	1	1	1	0	0	1	23	149.14
Mongmong-T-M	0	1	0	2	0	1	0	0	0	0	19	274.21
Hagatña	0	0	0	0	1	1	0	1	1	0	6	562.32
Agaña Heights	0	0	0	0	0	0	0	0	0	0	0	0.00
Sinajana	0	0	0	0	0	0	0	0	0	1	5	190.04
Chalan Pago-Ordot	0	0	0	0	0	0	0	0	0	0	4	57.75
Asan-Maina	0	0	0	0	0	0	0	0	1	0	1	46.08
Piti	0	0	0	0	0	0	0	0	0	0	0	0.00
Santa Rita	0	0	1	0	0	1	0	1	0	0	7	113.32
Agat	1	0	0	1	0	0	0	0	0	0	11	220.35
Yona	0	0	0	0	1	0	0	0	1	1	6	91.20
Talofofu	0	0	0	0	1	0	1	0	0	0	4	129.20
Inarajan	0	0	0	0	1	0	0	1	1	0	8	346.62
Merizo	0	0	0	0	0	0	0	0	0	0	5	266.24
Umatac	0	0	0	0	0	0	0	0	0	0	0	0.00
Tourist	0	1	0	0	0	0	0	0	0	0	5	
Unknown	0	0	0	0	1	0	0	1	0	0	3	
<b>TOTAL</b>	<b>6</b>	<b>10</b>	<b>9</b>	<b>8</b>	<b>9</b>	<b>11</b>	<b>7</b>	<b>7</b>	<b>8</b>	<b>5</b>	<b>2452</b>	<b>155.76</b>

NOTE: Rate = cases per 100,000 population for the year to date.

INFLUENZA/ILI ACTIVITY LEVEL - Regional (8 villages affected)  
 (ACTIVITY LEVELS: No activity, Sporadic, Local, Regional, Widespread)

**GUAM ANIMAL DISEASE (ZONOSSES) REPORTS**  
 REPORTS RECEIVED FOR THE WEEK ENDING 7/11/2015

Anaplasmosis – 1 canine